



U.S. AIR FORCE

Protective Actions



■ TAKE COVER!



Indoors

- Go to designated shelter areas
- Go to the basement if available
- Multi-story buildings, go to an interior small room or hallway on lowest floor as possible
- Go to the center of the building on the lowest level
- Take shelter under sturdy furniture, in a closet, hallway, bathroom, or under a stairwell
- Stay away from windows and chimneys



“Forging Combat Mobility Forces . . . Deploying Airman Warriors!”



U.S. AIR FORCE



Protective Actions

■ Outdoors or Mobile homes

- Get out of the mobile home or vehicle
- Go to a nearby shelter
- If no shelter is available take cover away from vehicles or mobile homes in a low-lying area and cover your head with your arms



“Forging Combat Mobility Forces . . . Deploying Airman Warriors!”



U.S. AIR FORCE

Shelter In-Place (SIP)



■ Why Shelter In Place?

- Buildings provide protection from extreme precipitation conditions and lightning
- In the event of a tornado, microburst, or other high-wind event, buildings provide protection against flying debris
- In the event that power lines are downed or main gas lines broken, it is better to be inside, away from the hazard
- In the event of a hazardous material release, broken gas line, or similar event, SIP allows a small area to be sealed off from the outside, prevent contaminants from being inhaled

“Forging Combat Mobility Forces . . . Deploying Airman Warriors!”



U.S. AIR FORCE

SIP Plan



- **Shelter-in-Place rooms are established in every facility on Altus AFB, stocked with useful disaster supplies and located centrally**
- If feasible, develop a system for knowing who is in your building in case there is an emergency
- Establish a warning system
 - Test systems frequently
 - Plan to communicate with people with hearing impairments or other disabilities or who do not speak English
- Account for all workers, visitors and customers as people arrive in the shelter
- Assign specific duties to employees in advance
- Get emergency supply kits and keep them in your shelter locations.
- Practice your shelter-in-place plan on a regular basis

“Forging Combat Mobility Forces . . . Deploying Airman Warriors!”



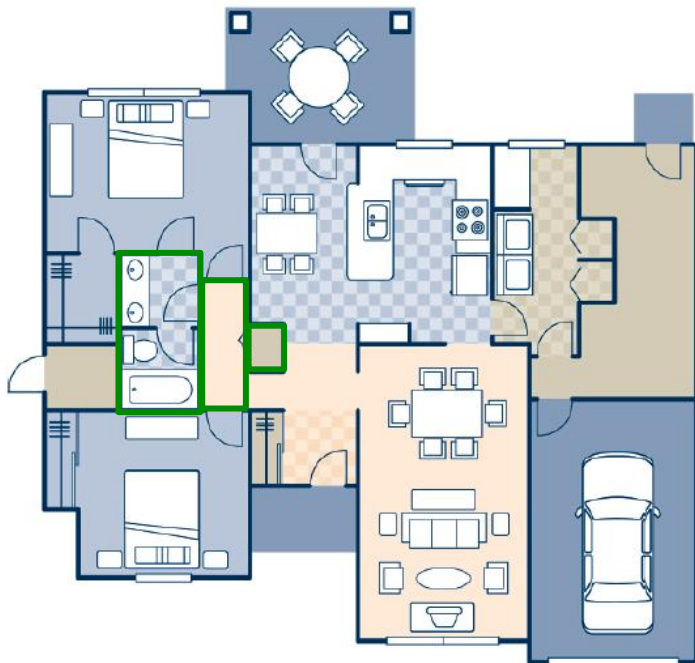
U.S. AIR FORCE

Great Plains & Capehart



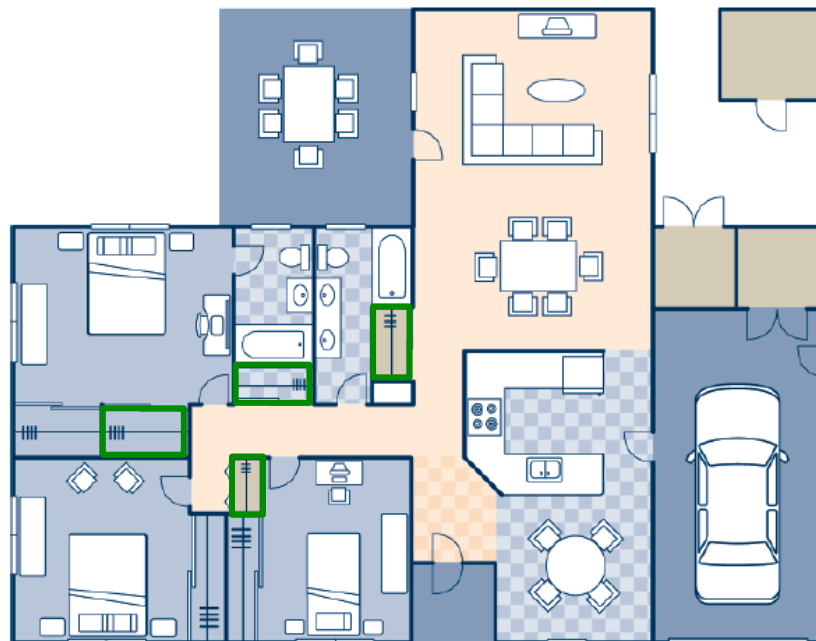
ALTUS

2 BEDROOM | GREAT PLAINS | E1-E6
1095 SQUARE FEET



ALTUS

3 BEDROOM | CAPEHART | 04-05 | TYPE E
1496 SQUARE FEET



 - Suggested Shelter

“Forging Combat Mobility Forces . . . Deploying Airman Warriors!”



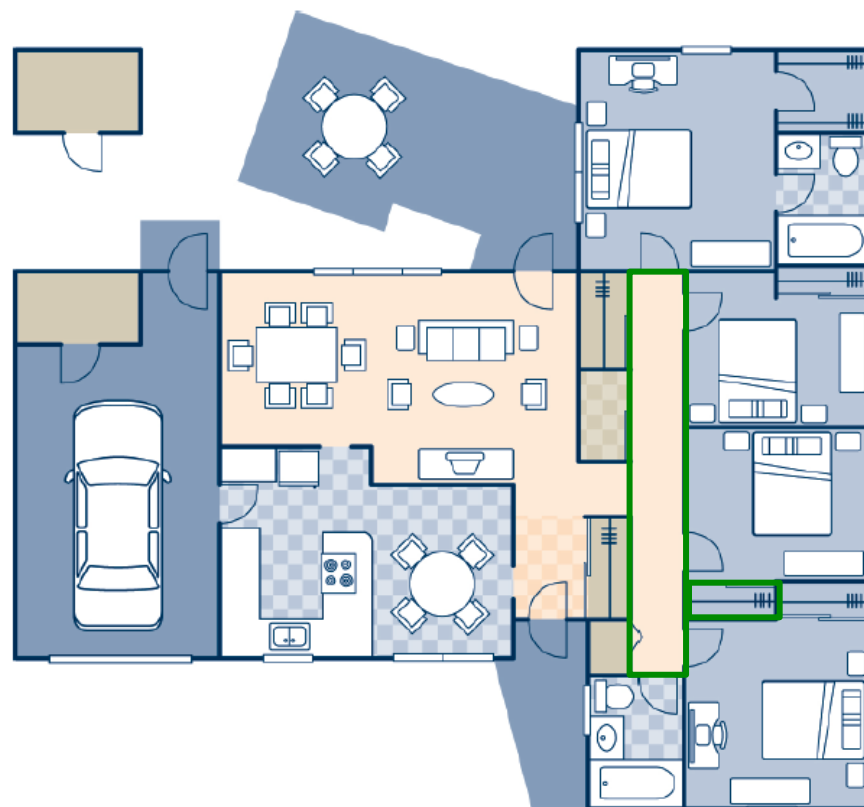
U.S. AIR FORCE

Capehart



ALTUS

4 BEDROOM | CAPEHART | 01-05 | TYPE L
1452 SQUARE FEET



 - Suggested Shelter

“Forging Combat Mobility Forces . . . Deploying Airman Warriors!”



U.S. AIR FORCE

Dorm Resident Protective Actions



- Obtain **Safe Area** location from your Dorm Manager
- Occupants relocate to lowest level
- Each floor has a designated shelter location



“Forging Combat Mobility Forces . . . Deploying Airman Warriors!”



U.S. AIR FORCE

Post Disaster Actions



- Continue to monitor radio, TV or etc for emergency information
- Stay away from areas with visible damage
- Structures may be weakened; if you are outside, do not enter until you are told that it is safe
- Stay away from downed electrical lines, broken pipes, etc
- Do not eat any food that has come into contact with flood waters, it may be contaminated
- Notify your relatives that you are safe, but keep it short so this does not tie up phone lines for emergency services

“Forging Combat Mobility Forces . . . Deploying Airman Warriors!”



U.S. AIR FORCE

Do's & Don'ts



■ **Do:**

- Stay Calm
- Administer first aid
- Report damage, downed wires
- Contact family & friends
- Call 911 for Emergency Life Saving
- Contact your supervisor/UCC



■ **Don't:**

- Turn on Utilities or appliances
- Smoke (no open flames)
- Enter damaged buildings/facilities



“Forging Combat Mobility Forces . . . Deploying Airman Warriors!”